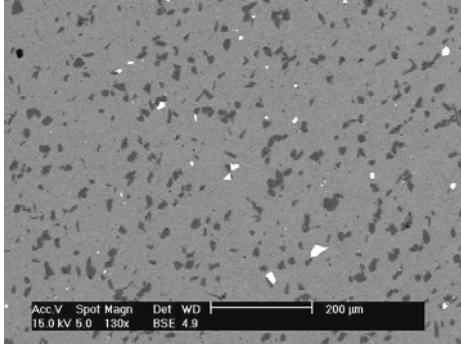




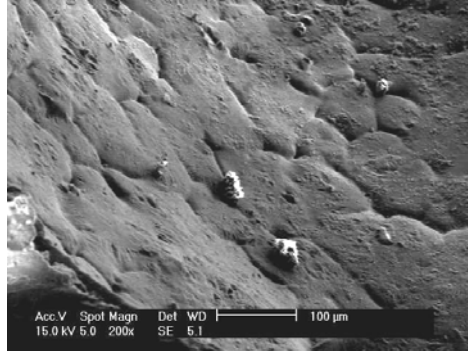
Al foamable compact and foams



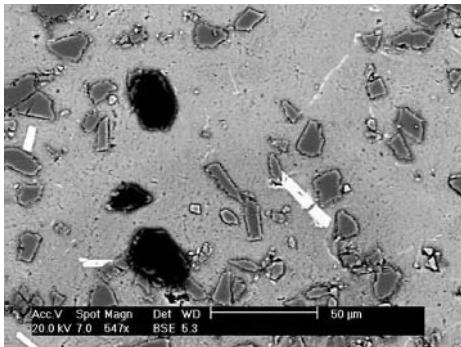
Al closed cell foam



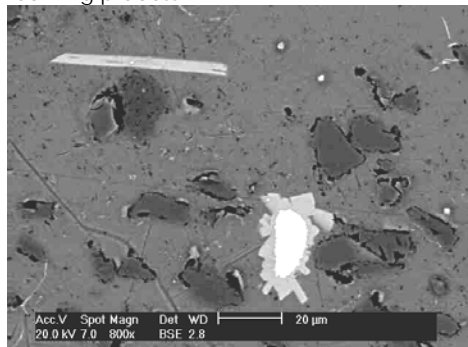
A foamable Al powder compact microstructure: white particles are TiH₂ and blacks are SiC particles



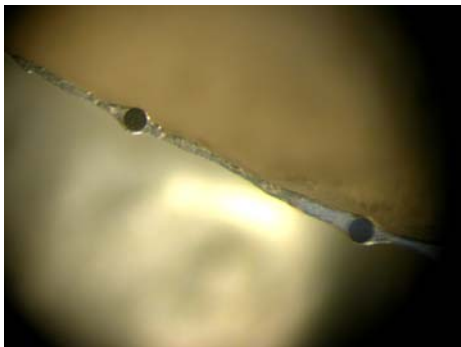
A view from the cell Al foam cell surface showing original powder boundaries which are not melted in the foaming process



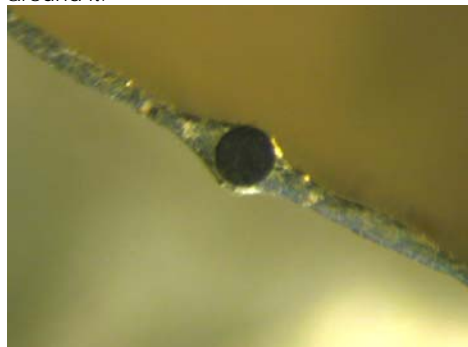
Al foam cell wall; black regions are Al-C phase.



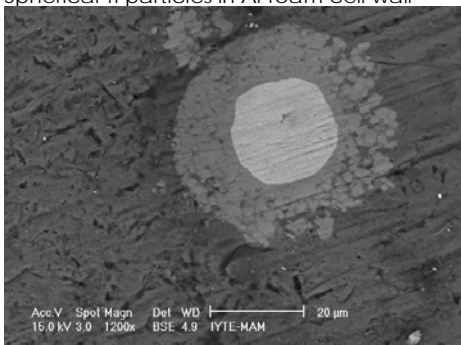
A partially decomposed TiH₂ particle and Al-Ti phase around it.



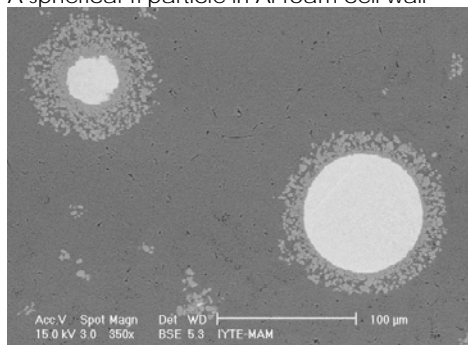
Spherical Ti particles in Al-foam cell wall



A spherical Ti particle in Al-foam cell wall



Ti particle in Al-foam cell wall



Ti particles in Al-foam cell wall